

CSSM Physics Report

24th ILDG Workshop

Waseem Kamleh

CSSM, University of Adelaide, Australia

24 March 2016





Phoenix – New Cluster

- University of Adelaide central facility.
- CPU + GPU nodes.
- 120 NeXtScale nodes, 3840 Intel cores.
- **72 K80 Nodes:** 144× Tesla K80, 2 per node.
- Peak performance of > 1 Pflop (SP), > 300 Tflops (DP)

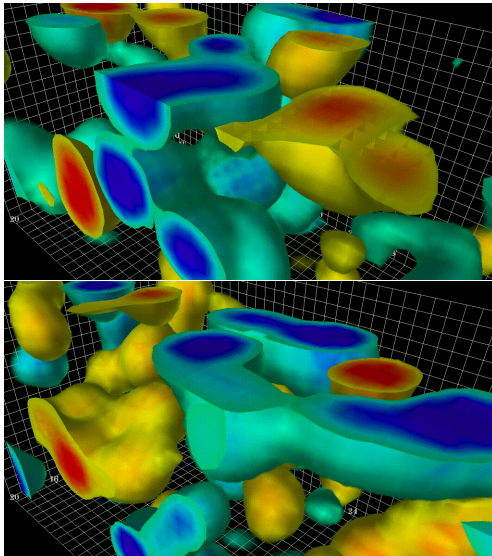
PACS-CS Configs

- 2+1 flavor full QCD configurations by PACS-CS are still seeing extensive use.
- Details: <http://www.jldg.org/ildg-data/PACSCSconfig.html>
- These ensembles form the “workbench” for our projects.

QED+QCD Configs

- CSSM/QCDSF/UKQCD generating QED+QCD configs.
- Non-compact formulation.
- Extension to ILDG format for QED potential?

Origin of Confinement



Origin of Confinement

